



Security Shutters | Stylish & Secure



**MAGNADOR<sup>®</sup>**



## WHY CHOOSE OUR SHUTTERS?

— Magnador is a trusted brand established 1988.

— Shutters are accepted as a security barrier by most insurance companies.

— Secure locking pin of up to 65mm both top and bottom to maximise security.

— Each integrated reinforced designed louvre, is secured with long galvanised steel screws to the shutter frame to provide ultra-strength.

— 10-year guarantee.

— Manufactured locally with quality assured materials.

— Available in 5 colours: White, Dark Grey, Light Grey, Bronze & Charcoal.

Magnador Security Shutters are manufactured from aluminium, making them perfect for windows, doors, sliding doors as well as room dividers, or passages requiring security.

Shutters provide both privacy and light control as well as being a security barrier that is accepted by most insurance companies. Magnador Security Shutters offer all the functional benefits of both burglar proofing, light control all in one beautiful combination. The 35mm frame, reinforced louvres and attention to quality fixings, reinforces the security offering. Boasting an industry leading powder coating, array of design options and easy operation Magnador Security Shutters add value to one's property together with convenience and aesthetic appeal.

Magnador offers both security and non-security shutter solutions.

Our aim is to provide high quality shutters that are eco-minded, use locally sourced material and are backed by knowledgeable and well-trained installation and sales teams around the country.



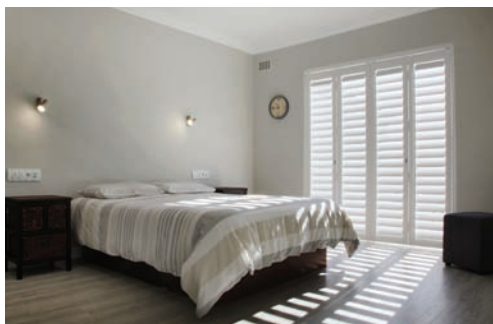


## TRACK SOLUTION



- Ideal for patios and stacking doors.
- Standard or Adjustable top track.
- Surface mounted or Recessed bottom track.
- Adjustable gravity fed bottom guide pin.
- High level safety.
- 10 year product guarantee.
- Short lead time.
- Stacks into the room at 90° (does not fold flat onto the wall).
- Water resistant.
- Light and air flow control.

## HINGE SOLUTION



- Ideal for windows, doors and passages.
- Architrave Frame.
- Multifunctional:
  - no need for drapes/curtains/blinds.
  - increases value of property.
  - offers escape out of the property.
- High level safety.
- 10 year product guarantee.
- Short lead time.
- Folds 180° flush onto the wall.
- Water resistant.
- Light and air flow control.



## Contact Us:

CAPE TOWN (HEAD OFFICE)  
12, 21st Street  
Elsiesriver Industrials  
Cape Town

TEL: 021 931 0150

GAUTENG  
94 Carter Street  
Forest Hill  
Gauteng

TEL: 011 434 2625

DURBAN  
8 Leon Place  
Sarnia  
Pinetown

TEL: 031 708 4594